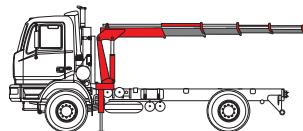


T Series: 2 - 17 Tm

MODELS	LIFTING MOMENT	MAX HYDRAULIC REACH	SLEWING ANGLE	SLEWING TIME	MAX WORKING HEEL	WORKING PRESSURE	CRANE WEIGHT WITHOUT STABILIZERS	WEIGHT OF SLIDING STABILIZERS	OIL TANK CAPACITY	OIL FLOW	DIMENSION
	Tm	m	°	s/180°	°	bar	kg	kg	l.	l./min	mm. B x h x S
702T-1s	1,82	5,7	370	22,5	5	160	375	70	25	12	1908x1700x390
702T-2s	-	7,24	370	25	5	165	420	70	25	12	1908x1700x390
703T-1s	3,06	5,7	370	22,5	5	230	375	70	25	12	1908x1700x390
703T-2s	-	7,24	370	25	5	230	420	70	25	12	1908x1700x390
705T-2s	4,11	7,79	370	20	5	250	560	85	25	15	2031x1920x455
705T-3s	-	9,22	370	25	5	250	610	85	25	15	2100x1920x455
807T-2s	6,90	8,09	370	20	5	260	840	100	34	18	1995x2275x535
807T-3s	-	9,82	370	25	5	260	920	100	34	18	1995x2300x535
809T-2s	8,40	6,00	405	15	4	250	1170	190	60	20	2350x2290x590
809T-3s	-	8,00	405	15	4	250	1250	190	60	20	2350x2290x590
809T-4s	-	9,55	405	15	4	250	1315	190	60	20	2350x2290x590
811T-2s	10,20	6,00	405	15	4	295	1190	190	60	20	2350x2290x590
811T-3s	-	8,00	405	15	4	295	1270	190	60	20	2350x2290x590
811T-4s	-	9,55	405	15	4	295	1335	190	60	20	2350x2290x590
815T-2s	14,3	9,26	380	17,5	4	270	1380	180	100	30	2490x2480x780
815T-3s	-	11,2	380	20	4	270	1510	180	100	30	2490x2480x780
815T-4s	-	13,2	380	25	4	270	1620	180	100	30	2490x2500x780
817T-2s	15,5	9,26	380	17,5	4	290	1430	180	100	30	2490x2480x780
817T-3s	-	11,2	380	20	4	290	1560	180	100	30	2490x2480x780
817T-4s	-	13,2	380	25	4	290	1670	180	100	30	2490x2500x780



Autocarro consigliato - Recommended truck - Camion conseillé - Camion aconsejado - Caminhão aconselhado

Mod.	702T	703T	705T	706T	807T	809T	811T	815T	817T
Passo*(mm)	2800	2800	3450	4350	2700	3100	3100	3100	3100
M.T.T.(ton)	3,0	3,5	5,0	6,5	8,0	12	12	15	15
G.V.W.(ton)	3,0	3,5	5,0	6,5	8,0	12	12	15	15

\*) Passo - Wheelbase - Empattement - Passo



DATI TECNICI TECHNICAL DATA

702 T/1S	Kg 1820* 1.0	995 1.75	580 3.13	380 4.68
702 T/2S	Kg 1870* 1.0	995 1.84	580 3.22	380 4.70
703 T/1S	Kg 3060* 1.0	1750 1.75	910 3.13	600 4.68
703 T/2S	Kg 3000* 1.0	1630 1.84	880 3.22	580 4.70
705 T/2S	Kg 4110* 1.0	2100 1.96	1160 3.34	750 4.96
705 T/3S	Kg 4040* 1.0	1980 2.04	1100 3.42	700 5.04
807 T/2S	Kg 4900* 1.0	3250 2.06	1860 3.63	1230 5.28
807 T/3S	Kg 4800* 1.0	3150 2.16	1750 3.73	1150 5.38
809 T/2S	Kg 8400* 1.0	3300 2.55	1930 4.25	1350 6.00
809 T/3S	Kg 8300* 1.0	3240 2.55	1860 4.25	1275 6.00
809 T/4S	Kg 8200* 1.0	3200 2.55	1810 4.25	1215 6.00
811 T/2S	Kg 10200* 1.0	4060 2.55	2400 4.25	1670 6.00
811 T/3S	Kg 10200* 1.0	4000 2.55	2320 4.25	1600 6.00
811 T/4S	Kg 10100* 1.0	3950 2.55	2275 4.25	1550 6.00
815 T/2S	Kg 14300* 1.0	6350 2.25	3420 4.05	2285 5.92
815 T/3S	Kg 14040* 1.0	6000 2.34	3260 4.14	2130 6.01
815 T/4S	Kg 14040* 1.0	5800 2.42	3125 4.22	2020 6.09
817 T/2S	Kg 15500* 1.0	6500 2.25	3530 4.05	2390 5.92
817 T/3S	Kg 15000* 1.0	6200 2.34	3360 4.14	2220 6.01
817 T/4S	Kg 15000* 1.0	6000 2.42	3220 4.22	2110 6.09

ACCESSORI	ACCESSORIES	ACCESSOIRES	ZUBEHOERE	ACCESORIOS	ACCESORIOS
- Prolonghe meccaniche	- Manual extensions	- Rallonges mécaniques	- Mechanische Ausleger	- Prolongaciones mecánicas	- Prolongações mecánicas
- Stabilizzatori girevoli	- Turning stabilizers	- Stabilisateurs pivotants	- Drehstabilisatoren	- Gatos giratorios	- Estabilizadores giratórios
- Attivazione elementi supplementari	- Supplementary element activation	- Activation éléments supplémentaires	- Extra-Zusatzfunktionen	- Activación elementos suplementarios	- Activação de elementos suplementares
- Posto di manovra in alto	- Top seat	- Poste de manoeuvre en haut	- Winde	- Puesto de maniobra arriba	- Posto de manobra no cimo
- Verricello	- Winch	- Treuil	- Fernsteuerung	- Cabrestante	- Guincho
- Comando a distanza	- Remote control	- Commande à distance	- Hydraulisch ausfahrbare	- Mando a distancia	- Comando a distancia
- Stabilizzatori allargabili idraulicamente	- Outriggers with hydraulic extension	- Stabilisateurs élargissables hydrauliquement	- Abstützungen	- Estabilizadores extraíbles hidráulicamente	- Estabilizador alongado hidráulicamente
- Limitatore di momento	- Load limiting device	- Limiteur de moment	- Momentbegrenzer	- Limitador de momento	- Limitador de momento

Dati, descrizioni e illustrazioni sono indicativi e non impegnano Amco Veba. Gru prodotte e/o commercializzate da Amco Veba - Data, descriptions and illustrations are merely indicative and not binding. Cranes manufactured and marketed by Amco Veba - Les données, descriptions et illustrations sont uniquement indicatives et n'engagent pas Amco Veba. Grues produites et/ou vendues par Amco Veba - Angaben, Beschreibungen und Abbildungen sind weisend und verpflichten nicht Amco Veba. Die Krane werden von Amco Veba hergestellt und/oder vermarktet - Los datos, las descripciones y las ilustraciones son indicativos y no implican compromiso para Amco Veba. Gruas producidas y/o comercializadas por Amco Veba - Os dados as descrições e ilustrações são indicativos e não comprometem Amco Veba. Guindaste produzidos e/ou comercializados pela Amco Veba.



Amco Veba s.r.l.  
Via Einstein, 4  
42028 Poviglio (RE) Italy  
Tel. +39 0522 40.80.11  
Fax +39 0522 40.80.80  
E-mail: commerciale@amcoveba.it  
www.amcoveba.com

COMPANY WITH QUALITY SYSTEM CERTIFIED BY DNV =ISO 9001/2000=



T Series





# T Series



- Limitatore di momento (CE)
- Comandi bilaterali
- Sfili esagonali
- Mart. sfilo indipendenti
- Mart. stab. fissi
- Valvole flangiate
- Serbatoio olio
- Kit di montaggio
- Norma di progettazione: DIN15018 - EN12999
- Classe di collaudo a fatica: B3
- Amco Veba Power System (AVPS) (817T)



- Load limiting device (CE)
- Dual controls
- Hexagonal section extensions
- Independent extension cylinders
- Fixed stabilizer cylinders
- Flanged valves
- Oil tank
- Assembly kit
- Design in accordance with: DIN15018 - EN12999
- Fatigue test classification: B3
- Amco Veba Power System (AVPS) (817T)



- Limiteur de moment (CE)
- Commandes bilaterales
- Extensions hexagonales
- Vérins d'extension indépendants
- Vérins stabilisateurs fixes
- Vannes bridées
- Réservoir pour huile
- Kit de montage
- Normes de calcul: DIN15018 - EN12999
- Tests de fatigue en classe: B3
- Amco Veba Power System (AVPS) (817T)



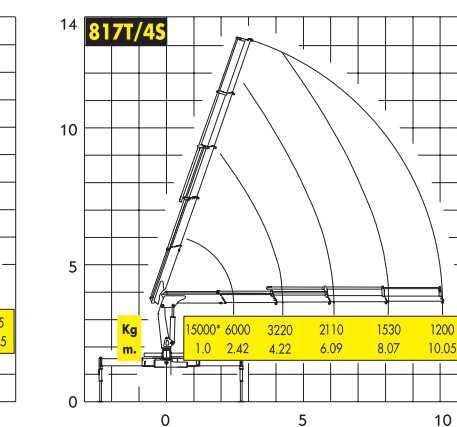
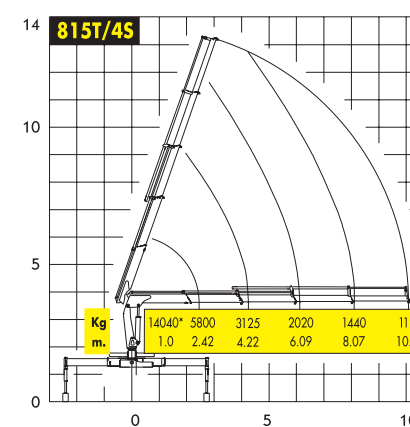
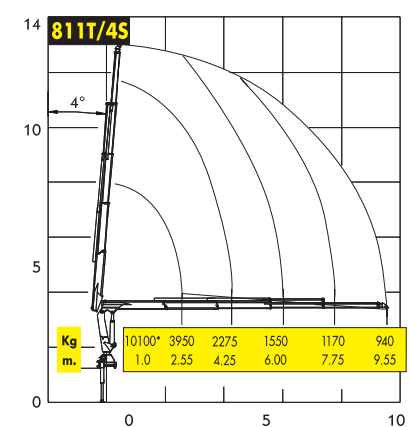
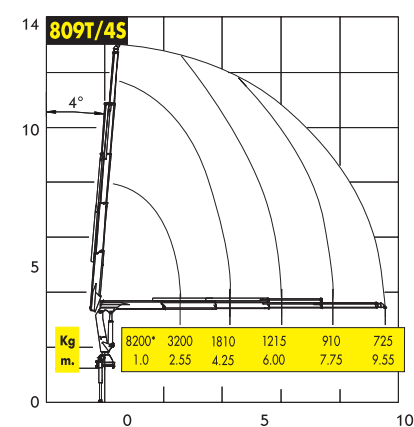
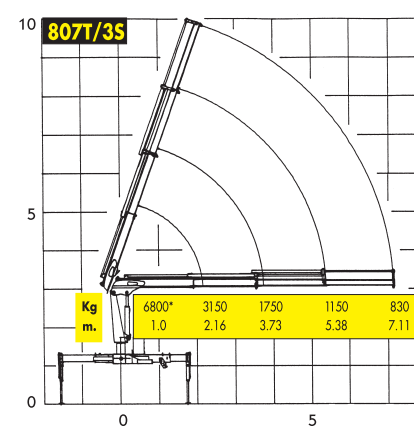
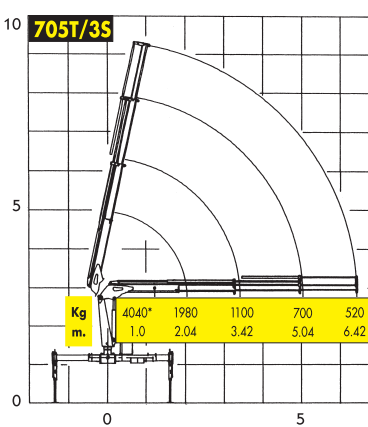
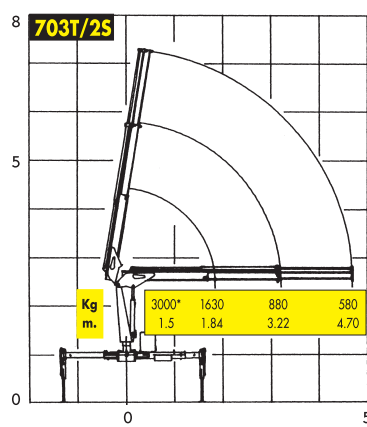
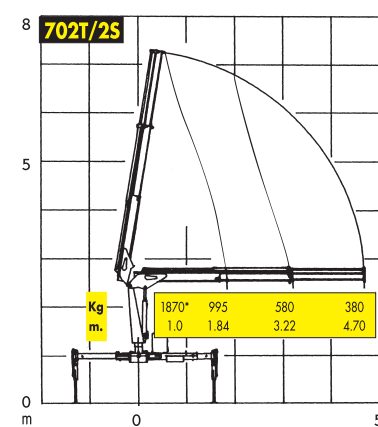
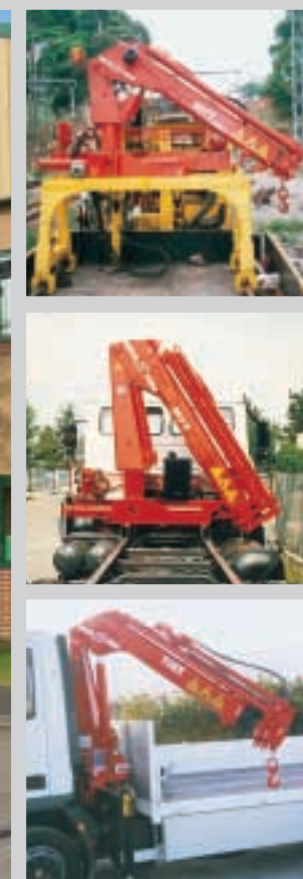
- Momentbegrenzer (CE)
- Beiseitige Kransteuerung
- Sechskantige Auszüge
- Unabhängige Auszugszylinder
- Feste Stabilisatoren
- Ventile mit Flansch
- Ölbehälter
- Montagesatz
- Berechnungsnorm nach: DIN15018 - EN12999
- Ermüdungstest in Klasse: B3
- Amco Veba Power System (AVPS) (817T)



- Limitador de momento (CE)
- Mandos bilaterales
- Brazos telescópicos hexagonales
- Cilindros extensión independientes
- Gatos estabilizadores fijos
- Válvulas pilotadas
- Depósito de aceite
- Kit de ensamble
- Norma del proyecto: DIN15018 - EN12999
- Tipo de ensayo a la fatiga: B3
- Amco Veba Power System (AVPS) (817T)



- Limitador de momento (CE)
- Comandos bilaterales
- Extensões hexagonais
- Cilindros de extensão independentes
- Gatos estabilizadores fijos
- Válvulas de segurança
- Depósito de óleo
- Kit de montagem
- Norma de projeto: DIN15018 - EN12999
- Tipo de Ensayo a la fatiga: B3
- Amco Veba Power System (AVPS) (817T)



(\*) Portata teorica Theoretical lifting capacity

