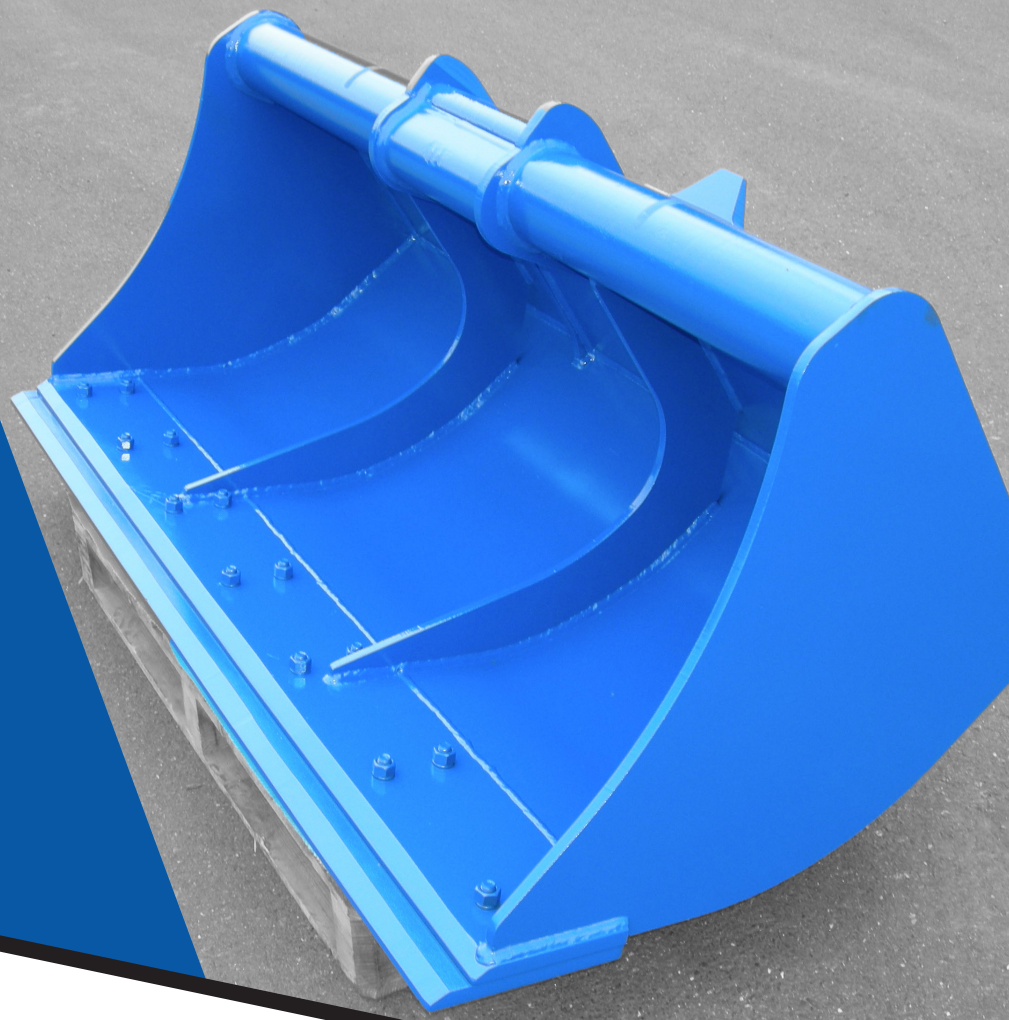


# STANDARD DITCHING BUCKET

## CREATION AND MAINTENANCE OF YOUR WORKS



### FEATURES :

These ditching buckets are available in bare blade version, with bolted counter blade or welded counter blade (except smaller buckets in class 50).

Their width and capacity may vary according to the carrier.

**SECURITY**

**PERFORMANCE**

**ROBUST DESIGN**

### ADVANTAGES :

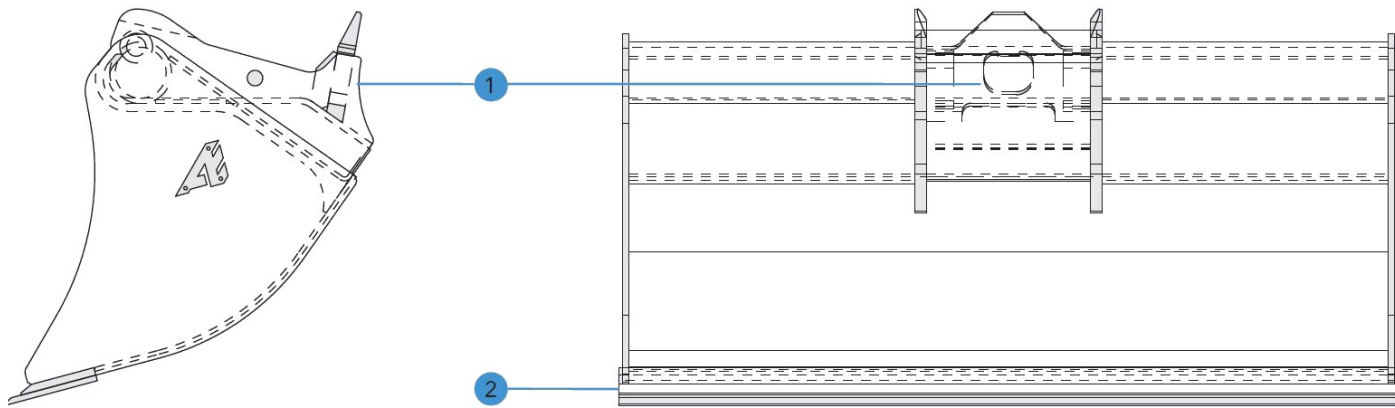
- QA / UA / AECW / S or direct quick coupler
- Bolted counter blade
- Ideal for cleaning ditches or rivers or for surface stripping and loading.

### OPTIONS :

Belt  
Rear blade for smoothing surfaces



## TECHNICAL DIAGRAM



## TECHNICAL CHARACTERISTICS

Reference				Carrier weight
<i>Ref.</i>	<i>mm</i>	<i>Litres</i>	<i>Kg*</i>	<i>t</i>
<b>Ditching bucket C05</b>	1000	105	69	1/2.4
<b>Ditching bucket C10</b>	1000	105	90	2.5/6
<b>Ditching bucket C10</b>	1200	170	132	2.5/6
<b>Ditching bucket C10</b>	1500	220	147	2.5/6
<b>Ditching bucket C20</b>	1500	270	213	7/11 + midi
<b>Ditching bucket C20</b>	1750	430	316	7/11 + midi
<b>Ditching bucket C31</b>	1800	525	470	12/15
<b>16/Ditching bucket C41</b>	2000	740	590	16/19
<b>Ditching bucket C51</b>	2000	1065	825	20/26
<b>Ditching bucket C61</b>	2400	1440	1185	27/37
<b>Ditching bucket C70</b>	2400	1720	1700	27/37

\*Weight with coupler UA kit