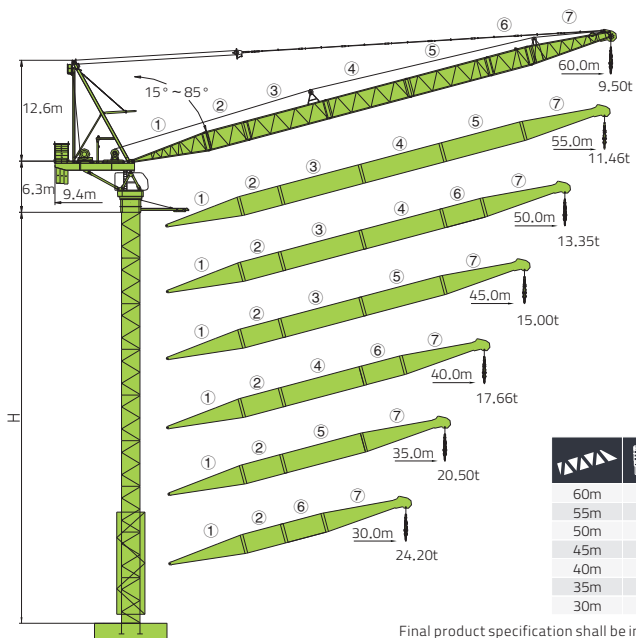


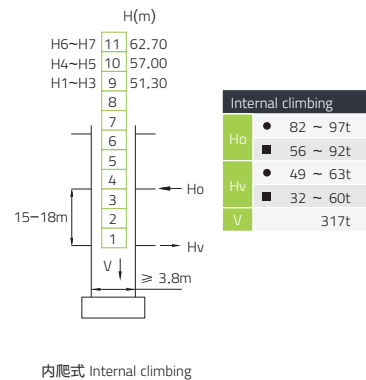
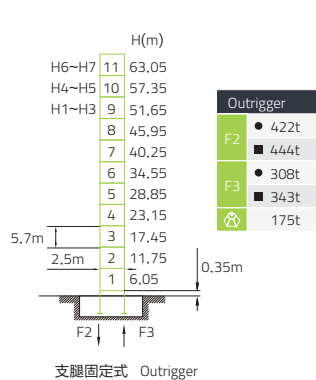
# L630-50



		H	(kg)	PHZA6000	PHZb6000	PHZ4000
60m	9.4m	H1	46000	3	2	4
55m	9.4m	H2	46000	3	2	4
50m	9.4m	H3	42000	3	2	3
45m	9.4m	H4	38000	3	2	2
40m	9.4m	H5	36000	3	1	3
35m	9.4m	H6	32000	3	1	2
30m	9.4m	H7	30000	3	2	0

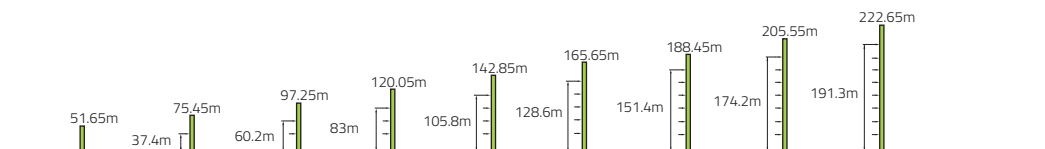
Final product specification shall be in accordance with purchase order or sales contract only

## 塔身 Masts / 反力 Reactions



- 工作状态反力  
Reactions in service
- 非工作状态反力  
Reactions out of service
- ⊗ 独立高度、最大起重臂的自重 (不含平衡重、吊重)  
Weight with max free-standing height, max jib (without counter-weight and load)

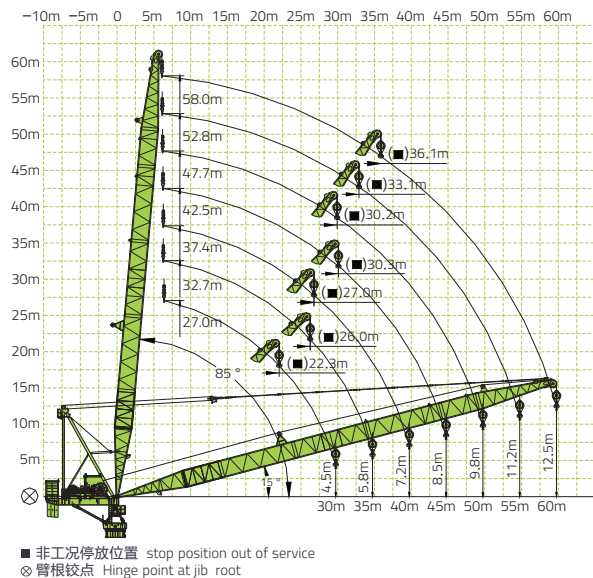
## 附着 Anchorages



630t/m ↑

# L630-50

起重臂 Luffing Jib








起重特性 Load Diagram

B(m)		Max Capacity m/t	20.0	25.0	30.0	35.0	40.0	45.0	50.0	55.0	60.0
60	○	6.3 ~ 23.0/25.00	25.00	23.88	19.98	17.19	14.83	12.96	11.46	10.28	9.50
	⊂	6.3 ~ 10.6/38.00	28.11	23.43	19.55	16.76	14.42	12.57	11.09	9.94	9.26 (59.7m)
55	○	5.9 ~ 25.6/25.00	25.00		21.40	17.97	15.46	13.59	12.22	11.46	
	⊂	5.9 ~ 10.7/46.00	30.86	25.46	21.02	17.60	15.11	13.26	11.92	11.20 (54.7m)	
50	○	5.4 ~ 27.2/25.00	25.00		23.23	19.90	17.09	14.86	13.35		
	⊂	5.4 ~ 13.3/50.00	35.97	27.97	22.88	19.57	16.75	14.56	13.17 (49.7m)		
45	○	5.0 ~ 28.5/25.00	25.00		23.83	19.86	16.98	15.00			
	⊂	5.0 ~ 14.3/50.00	36.64	28.74	23.48	19.53	16.69	14.85 (44.7m)			
40	○	4.5 ~ 28.6/2500	25.00		23.82	20.11	17.66				
	⊂	4.5 ~ 14.8/50.00	37.05	28.87	23.51	19.82	17.54 (39.7m)				
35	○	4.1 ~ 28.8/25.00	25.00		23.88	20.50					
	⊂	4.1 ~ 14.8/50.00	36.78	28.78	23.60	20.42 (34.7m)					
30	○	3.6 ~ 29.0/25.00	25.00		24.20						
	⊂	3.6 ~ 16.0/50.00	38.34	29.08	24.19 (29.7m)						

# L630-50

■ 传动机构 Mechanisms

配置 configuration								KW		
		III	IV	V	III	IV	V			
 起升 Hoisting	QPL5080	m/min	0~32	0~64	0~80	0~16	0~32	0~40	160	600m ⊕ (6 layers)
		t	25	12.5	6	50	25	12		
 回转 Slewing	HPW75F1,130B×2 HPW75F2,130B×1	r/min	0~0.61						3×7.5	⊕ 超出咨 询我们 Consult us if overtop
 变幅 Luffing	BPL900	min	3 (15° ~ 85° )						90	
	380V(±10%)50Hz	272.5kW								